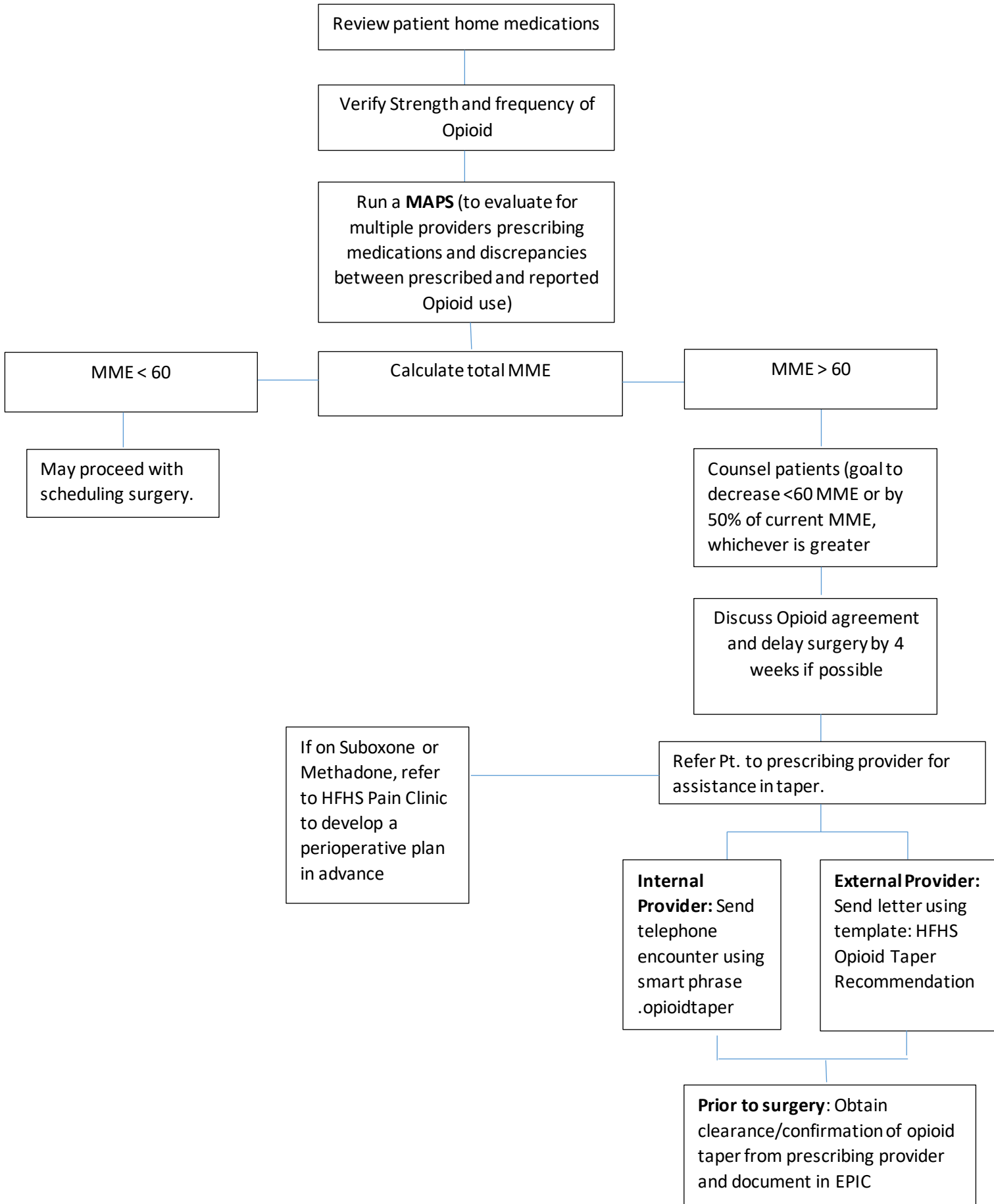


Pre-operative Pain Protocol Flowchart



Review patient home medications

Verify Strength and frequency of Opioid

Run a **MAPS** (to evaluate for multiple providers prescribing medications and discrepancies between prescribed and reported Opioid use)

MME < 60

Calculate total MME

MME > 60

May proceed with scheduling surgery.

Counsel patients (goal to decrease < 60 MME or by 50% of current MME, whichever is greater)

Discuss Opioid agreement and delay surgery by 4 weeks if possible

If on Suboxone or Methadone, refer to HFHS Pain Clinic to develop a perioperative plan in advance

Refer Pt. to prescribing provider for assistance in taper.

Internal Provider: Send telephone encounter using smart phrase .opioidtaper

External Provider: Send letter using template: HFHS Opioid Taper Recommendation

Prior to surgery: Obtain clearance/confirmation of opioid taper from prescribing provider and document in EPIC